

Northern Lighting ORION SERIES



LED Canopy Light

Northern Lighting

ORION SERIES



Certifications: UL/ CUL/ DLC/ LM79/ SAA/ ENEC/ CB/ CE/ ErP/ RoHS/ IK08

Not all products are qualified on the DLC QPL. To view our DLC qualified products please consult the DLC Qualified Product List at www.designlights.org

Housing

- Die cast aluminum housing.
- Modular design allows for easy installation, replacement and maintenance. This design also creates a chimney effect which provides exceptional thermal management.
- IK08 rated.

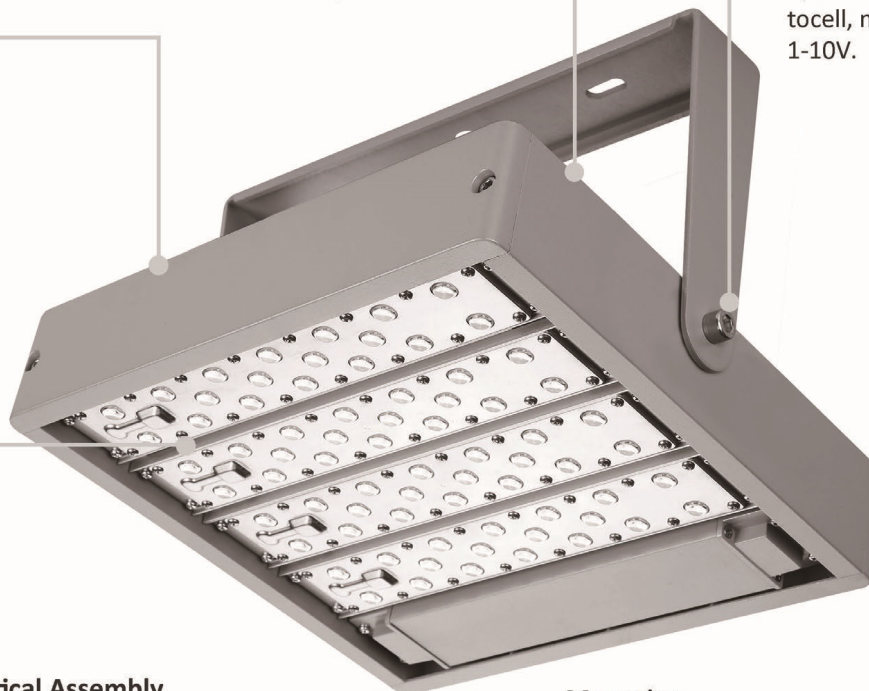
Finish

- Corrosion resistant polyester powder painted 100µm thickness.
- Meets a 1000-hour salt spray certification per ASTM B117/ ISO 9227:2012.
- Standard colors: Grey, Black, Bronze and White.
- Customized colors are available.



Electrical/ Key Components/ Controls

- 120-277VAC and 347-480VAC available.
- Surge protection to 20kV/10kA per ANSI/IEEE C62.41.2-2002 available.
- High quality LEDs, driver and components, e.g. MOLEX, WAGO connectors.
- Multiple smart lighting control options are available, e.g. photocell, motion sensor, DALI, 1-10V.



LED & Optical Assembly

- Each PCB are mounted with a TVS (Transient Voltage Suppressors) to protect the LEDs from voltage transients induced by lightning and other transient voltage events.
- High-uniformity LED optics are constructed of durable optical polycarbonate that is impact and UV resistant.
- The metal plate provides double protection for the LED light engine and prolongs LED optics life.
- Over 20 optical lenses are available for virtually any application.
- Each LED module are 100% tested prior to assembly which is IP67 rated.

Mounting

- Extremely flexible with almost 360 degree rotation.
- Interchangeable with the other ORION Series with a bracket change.
- Brackets are available for different installations.



TECHNICAL PARAMETERS

Power	30-320W
Input	120-277 VAC or 220-240 VAC or 347-480 VAC
PF	>0.95
THD	<20%
L70	>200,000H
Operating Temperature	-40°C ~ +50°C
Efficacy	120-160lm/W
ANSI CCT	3000K/4000K/5000K/5700K
Min CRI	70* or 80 or 85

IP Rating	IP67
SPD	Optional
Certificate/Qualification	UL/ CUL/ DLC/ LM79/ SAA/ ENEC/ CB/ CE/ ErP/ RoHS/ IK08
DALI	Optional
1-10V	Optional
Photocell	Optional
Smart Control	Optional
Optic (IESNA)	Type I, Type II, Type III, Type IV, Type V
Color Options	Grey/Black/Bronze/White

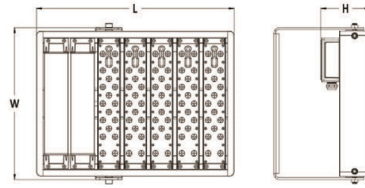
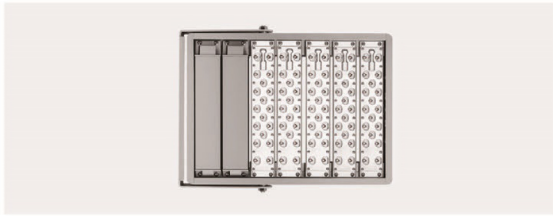
ORDERING INFORMATION

MODEL (Nominal Power)			MOUNTING	OPTIC LENS	CCT (ANSI)	OPTIONAL COLOR	LIGHTING CONTROL	ACCESSORY INFO
NLA30 30W	NLB40 40W	NLC80* 80W	C	T1S Type I Short	30K	★ BK Black (RAL:9011)	00 Not required	Bird Spike
NLA60 60W	NLB80 80W	NLC120* 120W		T2M Type II Medium	3045 ±175K		01 Photocell	10KA/20KA Surge Protection Device
NLA90 90W	NLB120 120W	NLC160* 160W		T3M Type III Medium	★ 40K 3985	GR Grey (RAL:7004)	02 Motion Sensor	Back Light Shield
NLA120 120W	NLB160 160W	NLC200* 200W		T3L Type III Long	±275K		03 Photocell + Motion Sensor	Safety Cable
NLA150 150W	NLB200 200W	NLC240* 240W		T4S Type IV Short	★ 50K 5028	BZ Bronze (RAL:8014)		
NLA180 180W	NLB240 240W	NLC280* 280W		T4M Type IV Medium	±283K	WH White (RAL:9010)	04 DALI	
NLA210 210W	NLB280 280W	NLC320* 320W		T5U Average beam angle 10°	57K 5665		05 1-10V dimming	
NLA240 240W	NLB320 320W			T5V Average beam angle 25°	±355K			
NLA270 270W				T5W Average beam angle 40°				
NLA300 300W				T5S Average beam angle 60°				
			T5M Average beam angle 90°					
			T5L Average beam angle 120°					
			T5X Average beam angle 150°					
			T5D Diffuser					

* DALI & Motion sensor unavailable

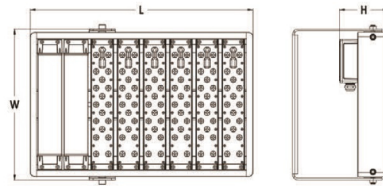
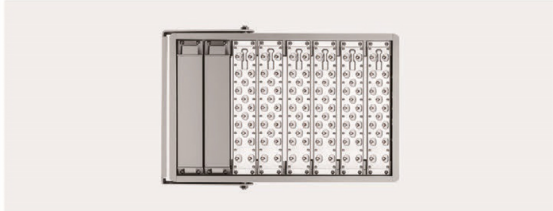
★ Regularly stocked item

● Example : NLA30-C-T1S-50K-GR-03



Model	NLB200-C/NLC200-C	Net Weight	8.63kg (19.00lbs)
LED Modules	5	Gross Weight	9.59kg (21.14lbs)
LEDs	90	Product Dimensions	450 x 345 x 112mm 17.72" x 13.58" x 4.41"
EPA (sq.ft.)	0.473	Carton Dimensions	545 x 415 x 160mm 21.46" x 16.34" x 6.3"

Model No.	System Power	Voltage	Drive Current	Luminous Flux		Efficacy(lm/W)
				3000K	4000/5000K	
NLB200-C	205W	120-277VAC	700mA	22140lm	24600lm	120
NLC200-C	205W	347-480VAC	700mA	22140lm	24600lm	120

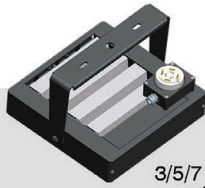


Model	NLA180-C/NLB240-C / NLC240-C	Net Weight	9.97kg (21.98lbs)
LED Modules	6	Gross Weight	11.07kg (24.41lbs)
LEDs	108	Product Dimensions	510 x 345 x 112mm 20.08" x 13.58" x 4.41"
EPA (sq.ft.)	0.509	Carton Dimensions	605 x 415 x 160mm 23.82" x 16.34" x 6.3"

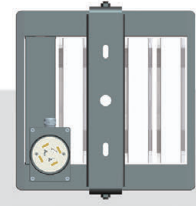
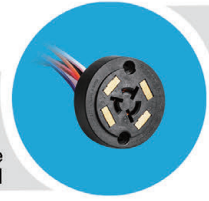
Model No.	System Power	Voltage	Drive Current	Luminous Flux		Efficacy(lm/W)
				3000K	4000/5000K	
NLA180-C	182W	120-277VAC	530mA	20475lm	22750lm	125
NLB240-C	246W	120-277VAC	700mA	26568lm	29520lm	120
NLC240-C	246W	347-480VAC	700mA	26568lm	29520lm	120

CUSTOMIZED SOLUTIONS

1



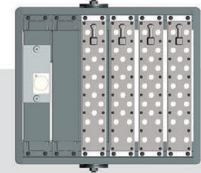
3/5/7 -pin NEMA Receptacle
+ Shorting Cap/Photocell



2



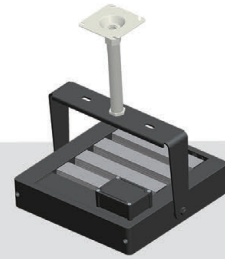
Motion Sensor



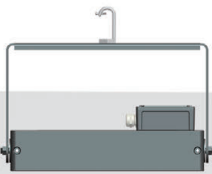
3



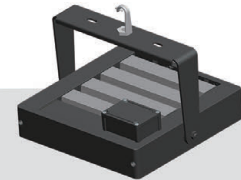
G3/4 pendant Rod
+ Ceiling Plate



4



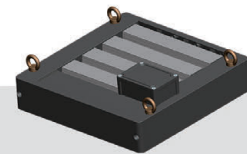
Suspension Hook



5



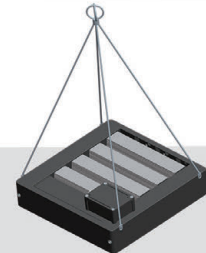
Suspension Rings



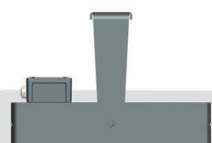
6



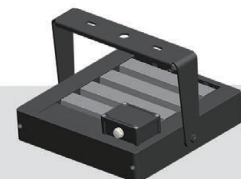
Steel Suspension
Cable



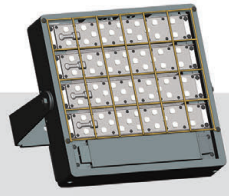
7



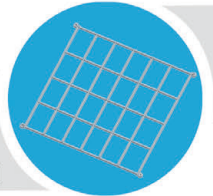
Mini Photocell



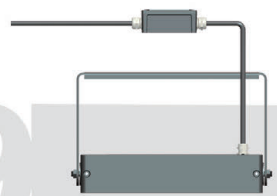
8



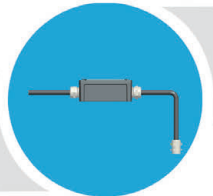
Anti-vandal Grill



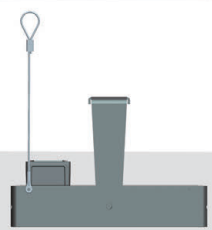
9



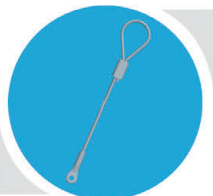
Separate Junction Box



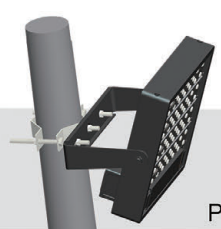
10



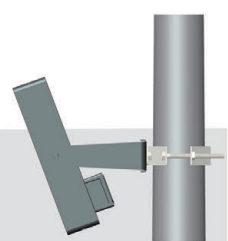
Safety Cable



11



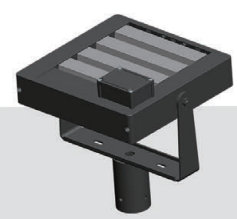
Pole Bracket Clamp



12



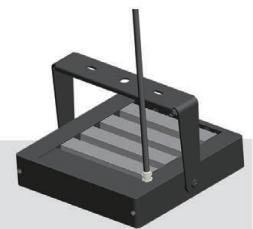
Garden Light



13



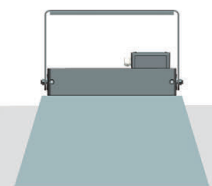
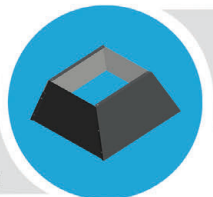
No Junction Box



14

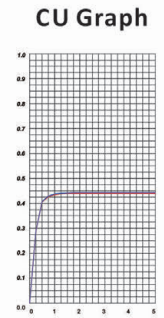
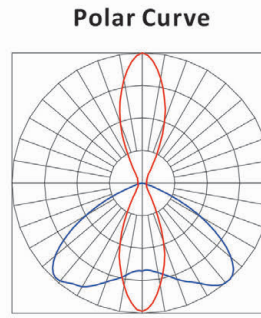
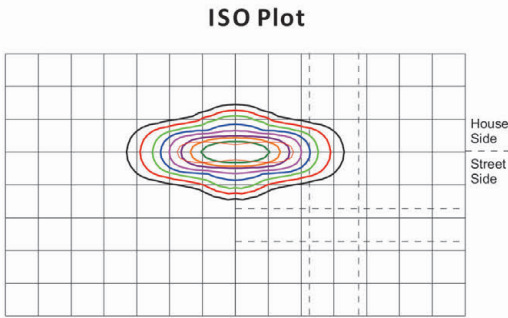


Light Shielding

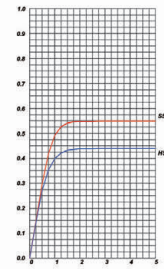
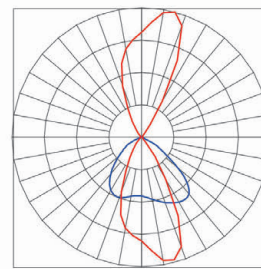
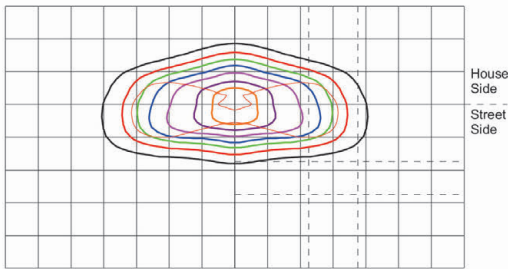


PHOTOMETRICS

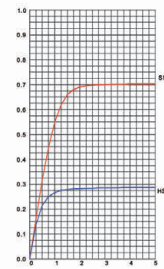
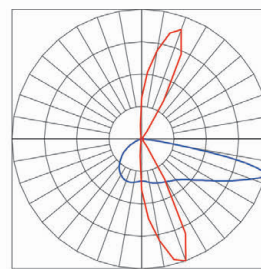
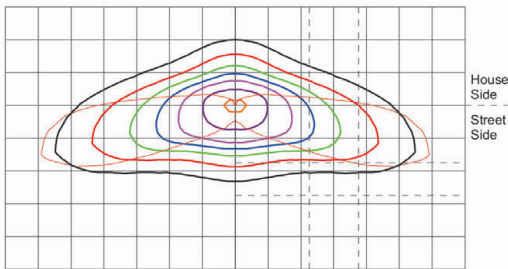
T1S
Type I
Short
Typical use:
Industrial
Street/Roadside



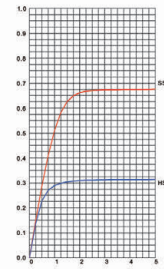
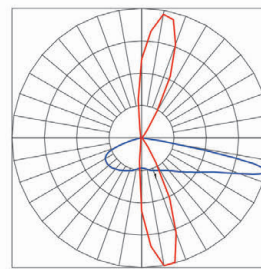
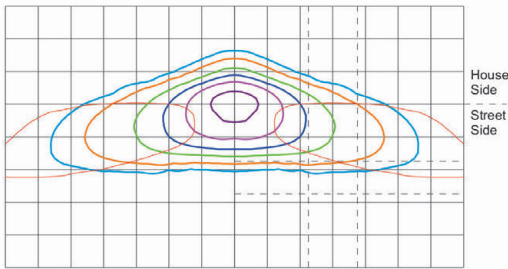
T2M
Type II
Medium
Typical use:
Street/Roadside



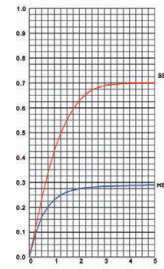
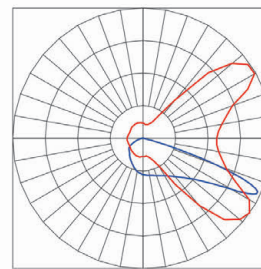
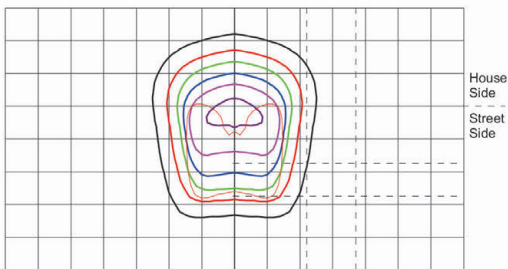
T3M
Type III
Medium
Typical use:
Street/Roadside



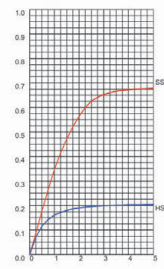
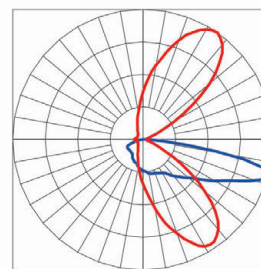
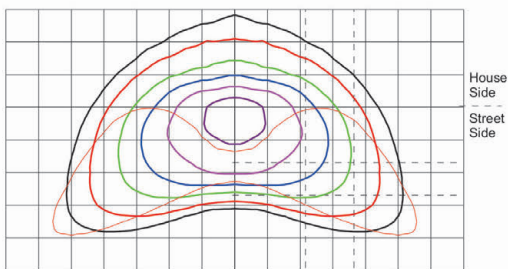
T3L
Type III
Long
Typical use:
Street/Roadside



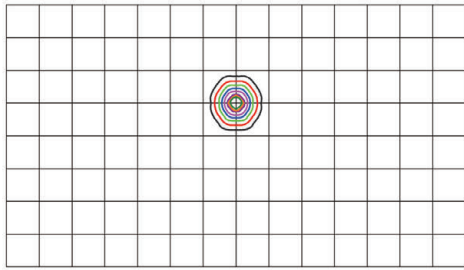
T4S
Type IV
Short
Typical use:
Area/High mast



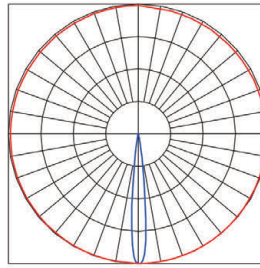
T4M
Type IV
Medium
Typical use:
Highway/Multi-Lane



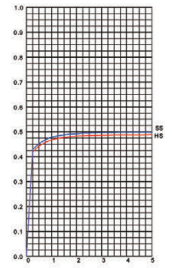
T5U
Average beam angle 10°
Typical use: Stadium



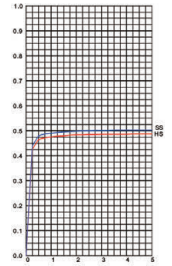
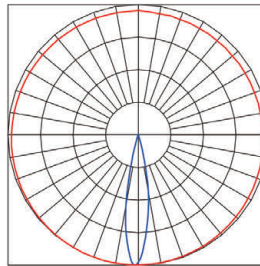
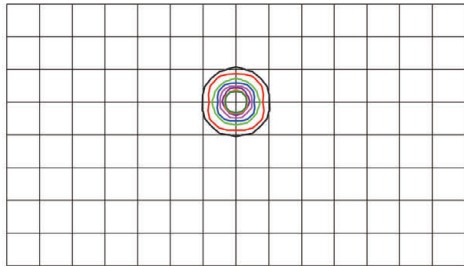
Polar Curve



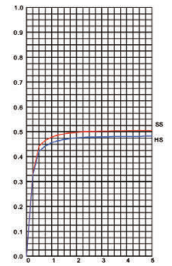
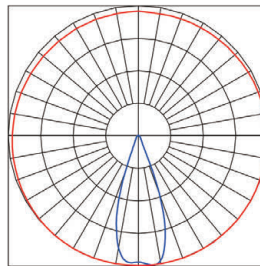
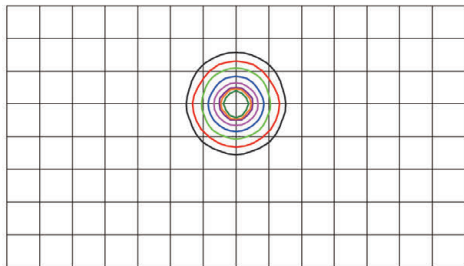
CU Graph



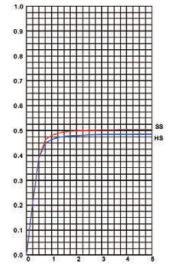
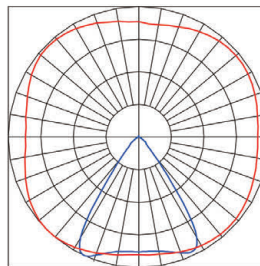
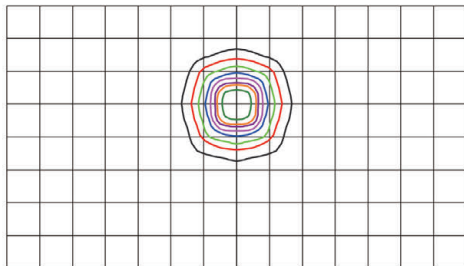
T5V
Average beam angle 25°
Typical use: Stadium



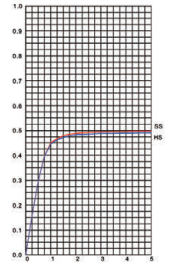
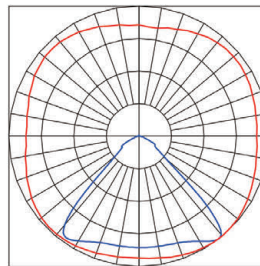
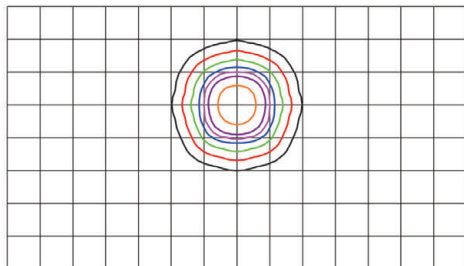
T5W
Average beam angle 40°
Typical use: Architectural



T5S
Average beam angle 60°
Typical use: Industrial



T5M
Average beam angle 90°
Typical use: Industrial



T5L
Average beam angle 120°
Typical use: Gas station

